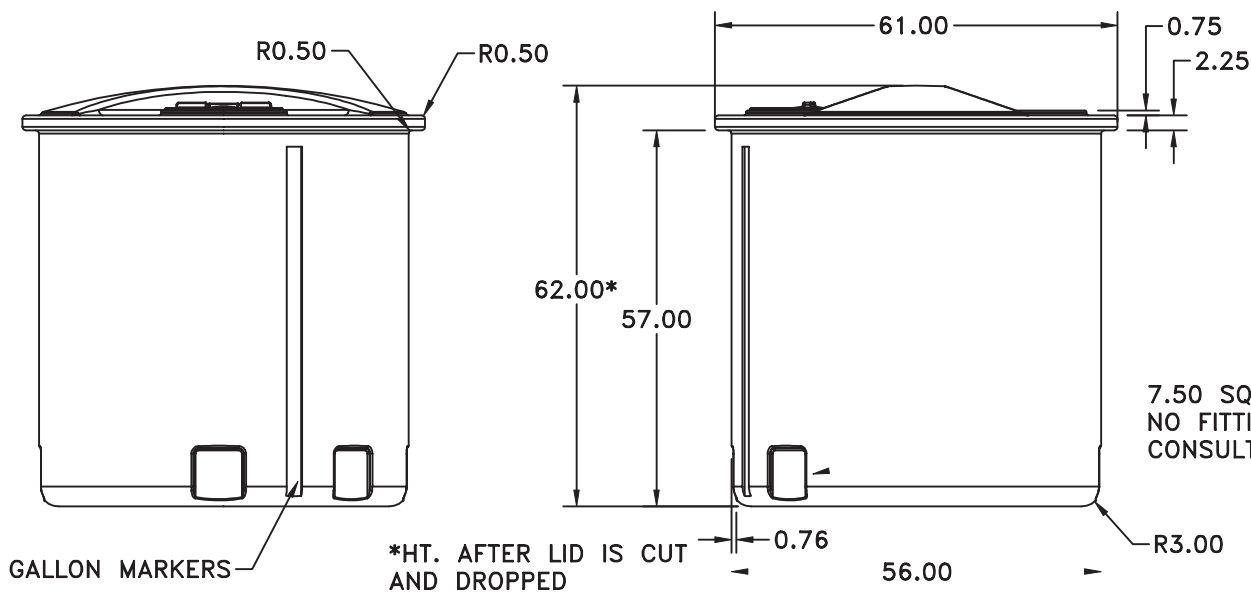
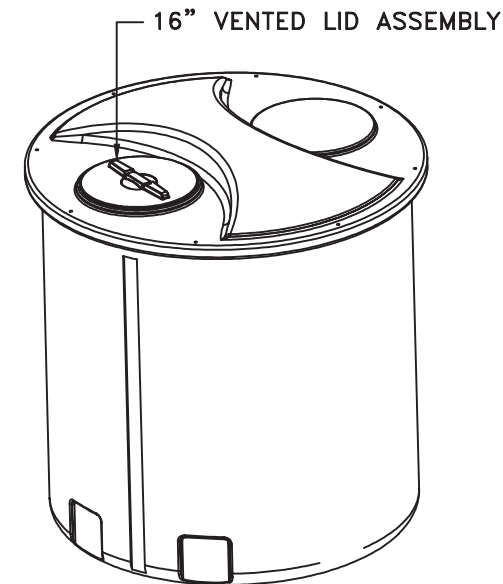
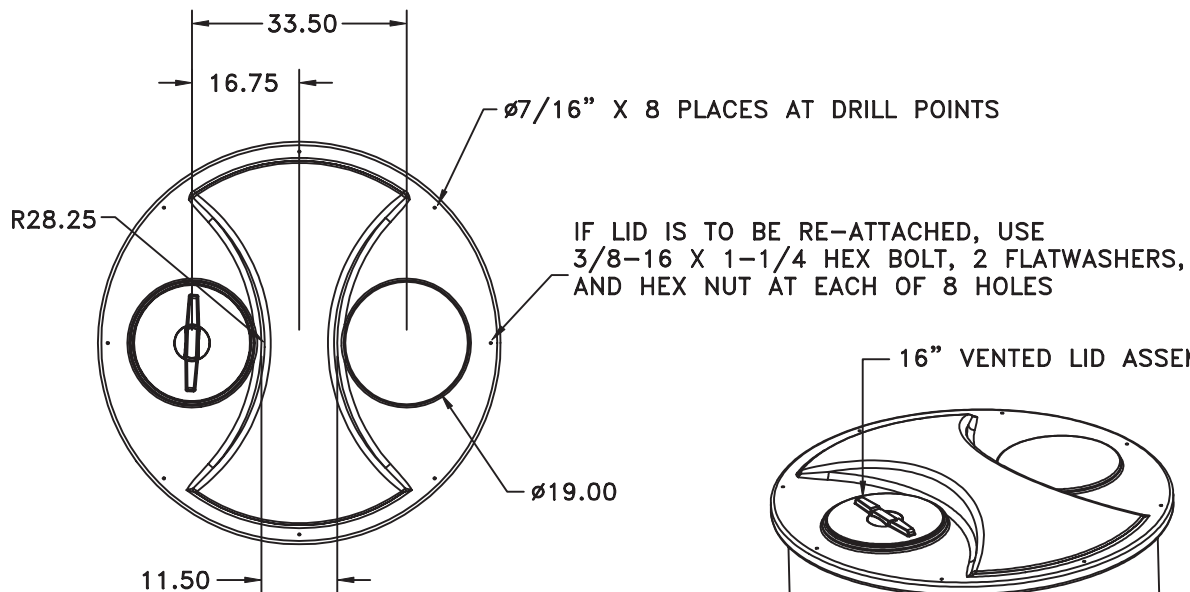
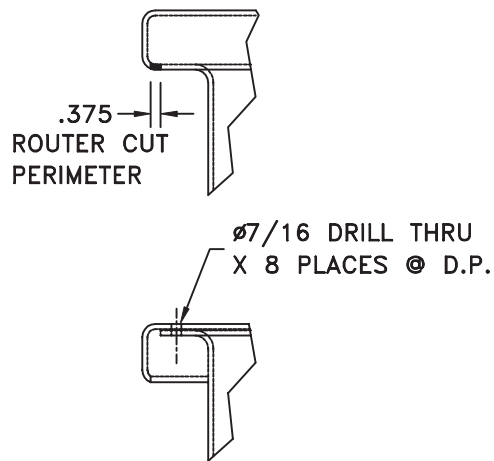


LID CUT AND DROP DETAIL



7.50 SQUARE FITTING SUMP 2 PLACES
NO FITTING FURNISHED WITH STANDARD TANK.
CONSULT FACTORY REGARDING FITTING OPTIONS.

		DRAWN /		MATERIAL / SHOT WEIGHT			
		REH/9/18/00		M111	M134	U625	P938
NG REMOVED AS STD.		3/20/01	APPRD. / DATE	14			
REV	DESCRIPTION	DATE	APPRD	REH/4/13/96			
ALL DIMENSIONS ARE IN DECIMAL INCHES TOLERANCES UNLESS OTHERWISE SPECIFIED ± .5% @ 68° F				THIRD ANGLE PROJECTION ANSI 14.5M		NOTES: 1. .250 NOMINAL WALL	

CSI

ChemIndustrial Systems, Inc.
PO Box 500, Cedarburg, WI 53012
262-375-8570 • (Fax) 262-375-8559 • info@chemindustrial.com