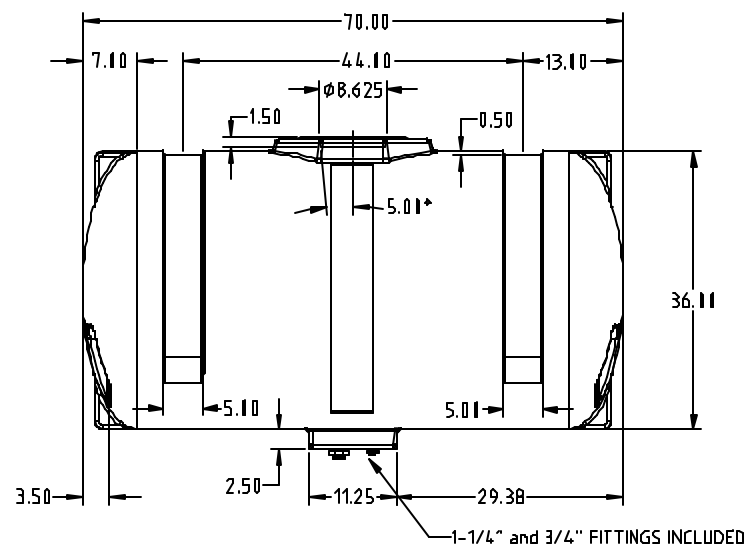
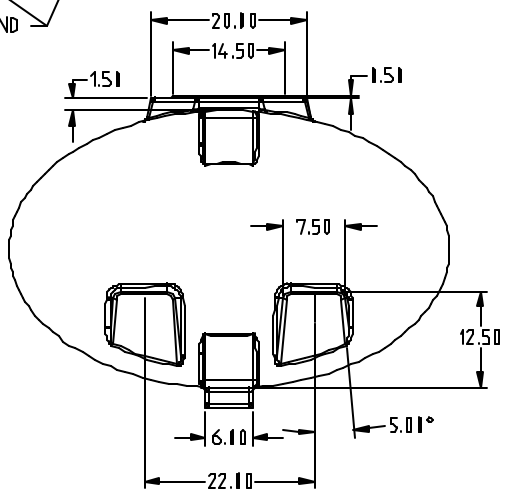


**GENERAL NOTES:**

1. USE .027 IN./IN. SHRINK ALLOWANCE
2. MOLD TO BE FULLY WELDED INSIDE AND STITCH WELDED OUTSIDE
3. CLAMPING TO BE WITH 1/2" X 1-1/2" GRADE 8 BOLTS, GRADE 5 NUTS AND NUT HOLDERS.
4. LID RING RECESS TO HAVE KNIFE EDGE ON INSERT TO MINIMIZE TRIMMING.



		DRAWN / DATE		MATERIAL / SHOT WEIGHT			
		REH/4/16/01		M111	M134	U625	P938
		APPRD. / DATE					
		REH/4/16/01					
REV	DESCRIPTION	DATE	APPRD				
ALL DIMENSIONS ARE IN DECIMAL INCHES TOLERANCES UNLESS OTHERWISE SPECIFIED $\pm .5\% \text{ @ } 68^\circ \text{ F}$				NOTES: 1. .300 NOMINAL WALL			
THIRD ANGLE PROJECTION ANSI 14.3M 							

**CSI**  
 ChemIndustrial Systems, Inc.  
 PO Box 500, Cedarburg, WI 53012  
 262-375-8570 • (Fax) 262-375-8559 • info@chemindustrial.com

SCALE **N.S.**      PART NO.