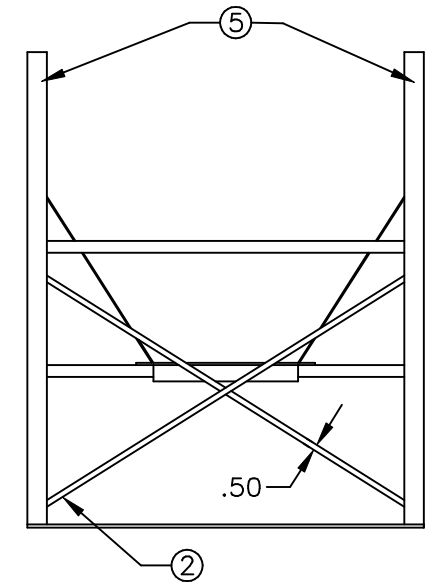
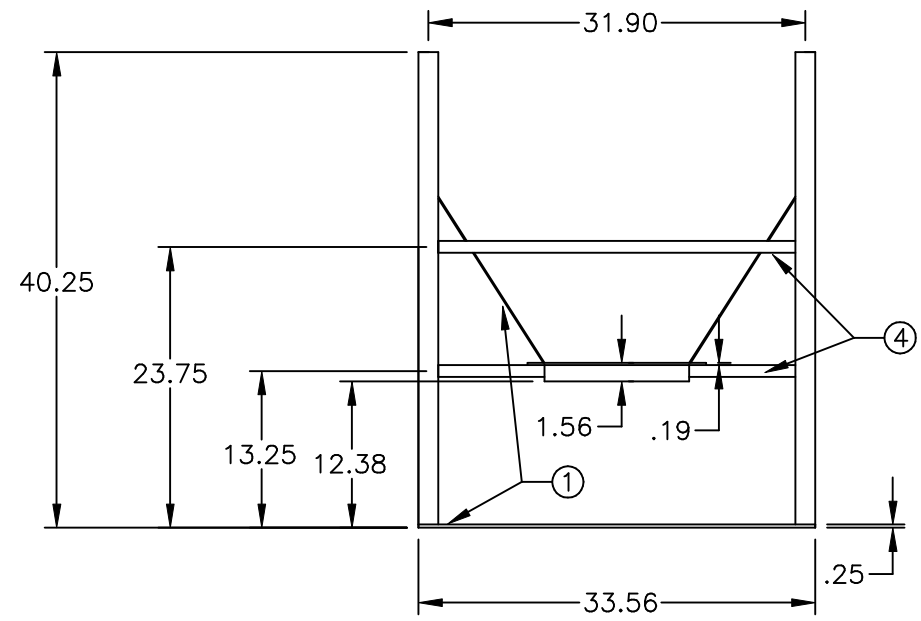
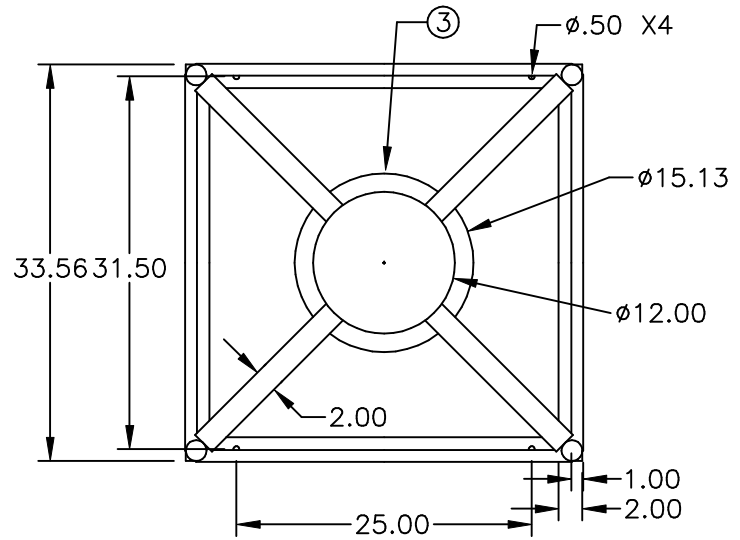


KEY	PART NUMBER	DESCRIPTION	QTY.
1	B02500X20000	1/4 X 2 FLAT BAR	212 IN
2	R05000	1/2" MILD STEEL ROD	4 @ 36 IN
3	RAR-12	12" ROLLED ANGLE	1
4	T1000X01090	1" OD ROUND MILD X .109	181 IN
5	T1660X01090	1.66 RD MILD STL FULL	4 @ 40 IN

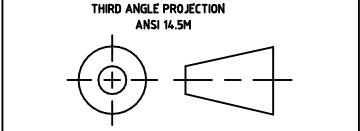


REV	DESCRIPTION	DATE	APPRD
A	ADDED B.O.M.	5/15/06	NVE


DRAWN / DATE NVE 6/30/05
APPRD. / DATE DHJ 10/14/05

MATERIAL MILD STEEL

ALL DIMENSIONS ARE IN DECIMAL INCHES
TOLERANCES UNLESS OTHERWISE SPECIFIED
± 1% @ 68° F



NOTES:
1. POWDER COATED - BLACK COLOR
2. WEIGHT 82 LBS.



ChemIndustrial Systems, Inc.
PO Box 500, Cedarburg, WI 53012
262-375-8570 • (Fax) 262-375-8559 • info@chemindustrial.com

SCALE N.S.	PART NO.
---------------	----------